

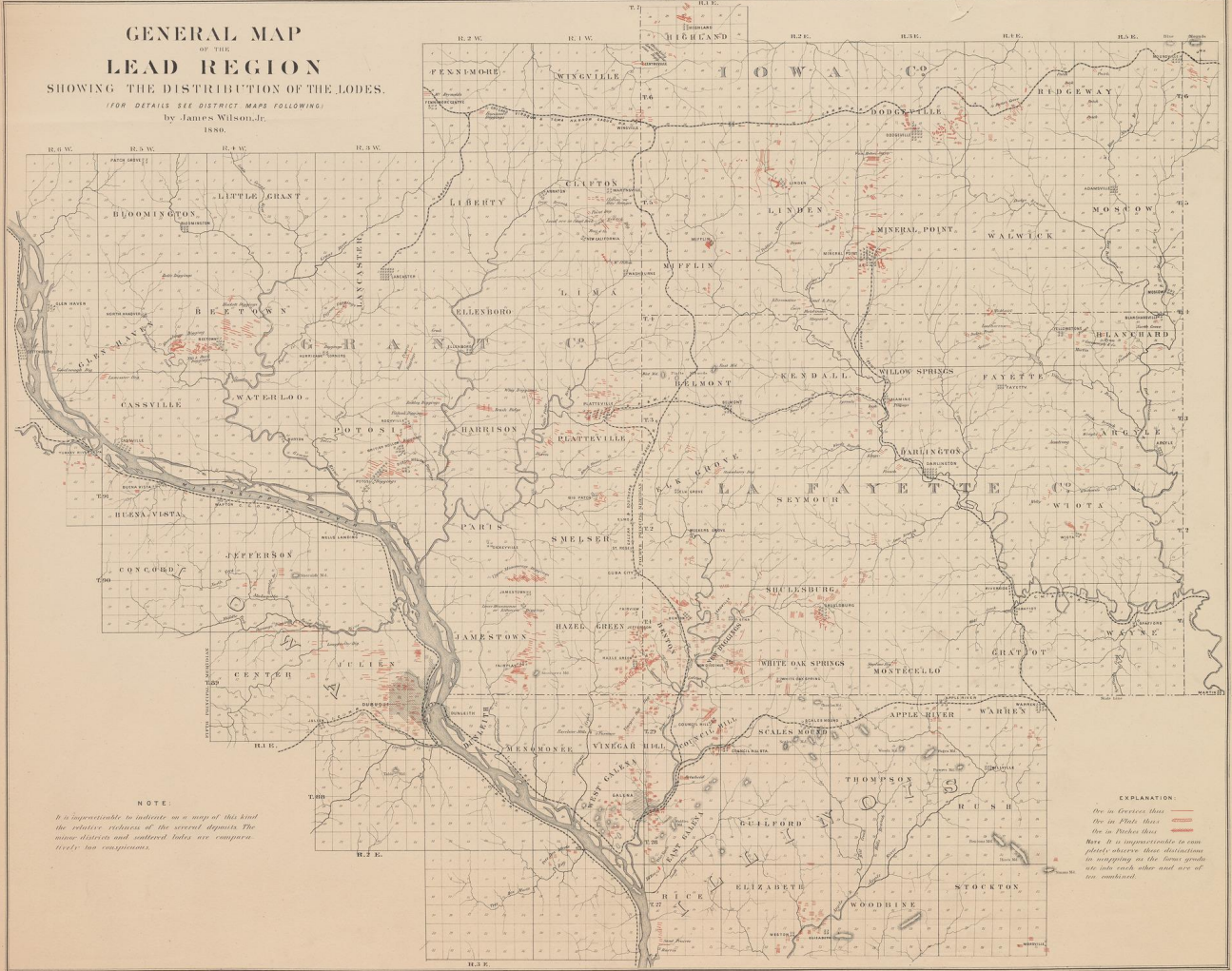
Yale University Library Digital Collections

Title	General map of the lead region showing the distribution of the lodes / by James Wilson, Jr.
Creator	Wilson, James, Jr
Date	1880
Rights	The use of this image may be subject to the copyright law of the United States (Title 17, United States Code) or to site license or other rights management terms and conditions. The person using the image is liable for any infringement
Container information	BRBL_00556
Generated	2021-03-02 15:20:58 UTC
Terms of Use	https://guides.library.yale.edu/about/policies/access
View in DL	https://collections.library.yale.edu/catalog/15814558

WISCONSIN GEOLOGICAL SURVEY.
E. C. HAMBURG, CHIEF GEOLOGIST.

PLATE XXXI.

GENERAL MAP
OF THE
LEAD REGION
SHOWING THE DISTRIBUTION OF THE LODES.
(FOR DETAILS SEE DISTRICT MAPS FOLLOWING.)
by James Wilson, Jr.
1880.



NOTE.
It is impracticable to indicate on a map of this kind the relative richness of the several deposits. The mine districts and scattered lodes are comparatively less conspicuous.

EXPLANATION.
See in Greenish Blue [Symbol]
See in Blue [Symbol]
See in Pink [Symbol]
See in Yellow [Symbol]
See in Red [Symbol]
See in Purple [Symbol]
See in Orange [Symbol]
See in Brown [Symbol]
See in Black [Symbol]

31298
1880