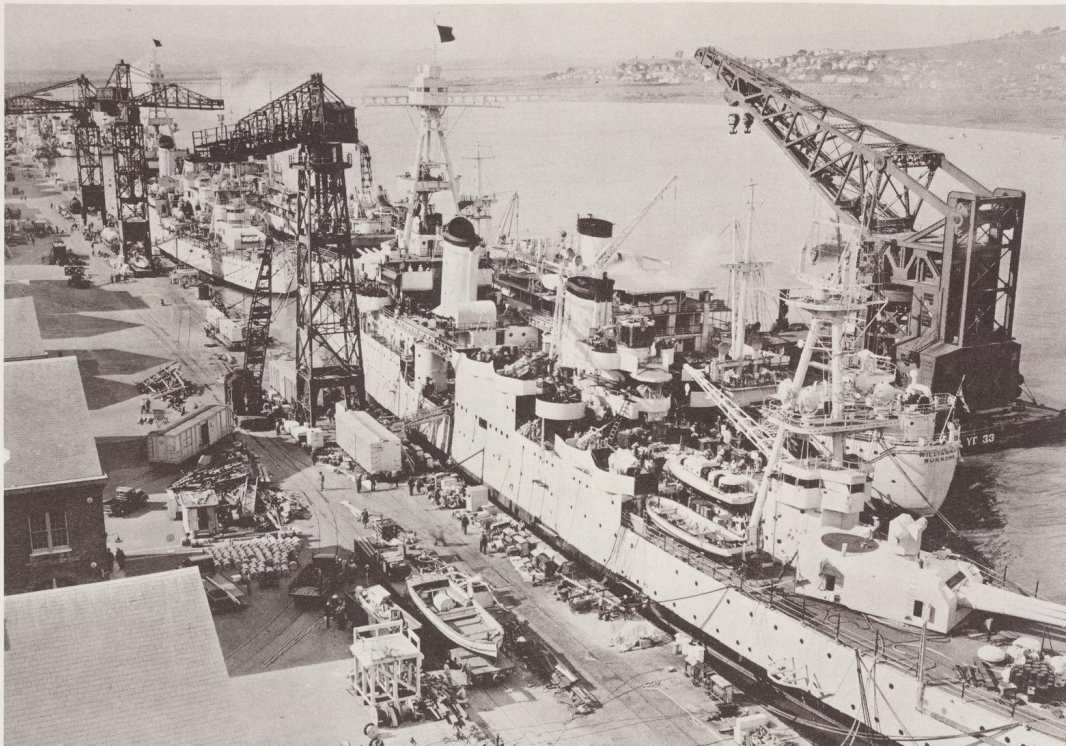




Yale University Library Digital Collections

Title	Lively dockside activity at Mare Island in September of 1940
Rights	The use of this image may be subject to the copyright law of the United States (Title 17, United States Code) or to site license or other rights management terms and conditions. The person using the image is liable for any infringement.
Generated	2021-02-18 11:18:40 UTC
Terms of Use	https://guides.library.yale.edu/about/policies/access
View in DL	https://collections.library.yale.edu/catalog/2001200



The busy scene on this page shows lively dockside activity at Mare Island in September of 1940. The heavy cruiser *Chicago* (details on page 45) is in the immediate foreground, with the transport *William Ward Burroughs* outboard. Ahead of the *Chicago* is another heavy cruiser, the *Houston* with a tanker outboard. Both cruisers were sunk in World War II. Four destroyers are nested farther along the sea wall. Causeways to Vallejo are visible in the distance.

In the small photograph at right, the old destroyer *McFarland* (DD239), in a decommissioned status, is alongside the seawall, awaiting conversion to a seaplane tender. Outboard of her is the *Eider*, a Bird-class minesweeper, which had been in mothballs for many years and is being prepared for commissioning as a gate tender, YG20. Beyond the *Eider* is another minesweeper of the same class. The date is late March of 1940.