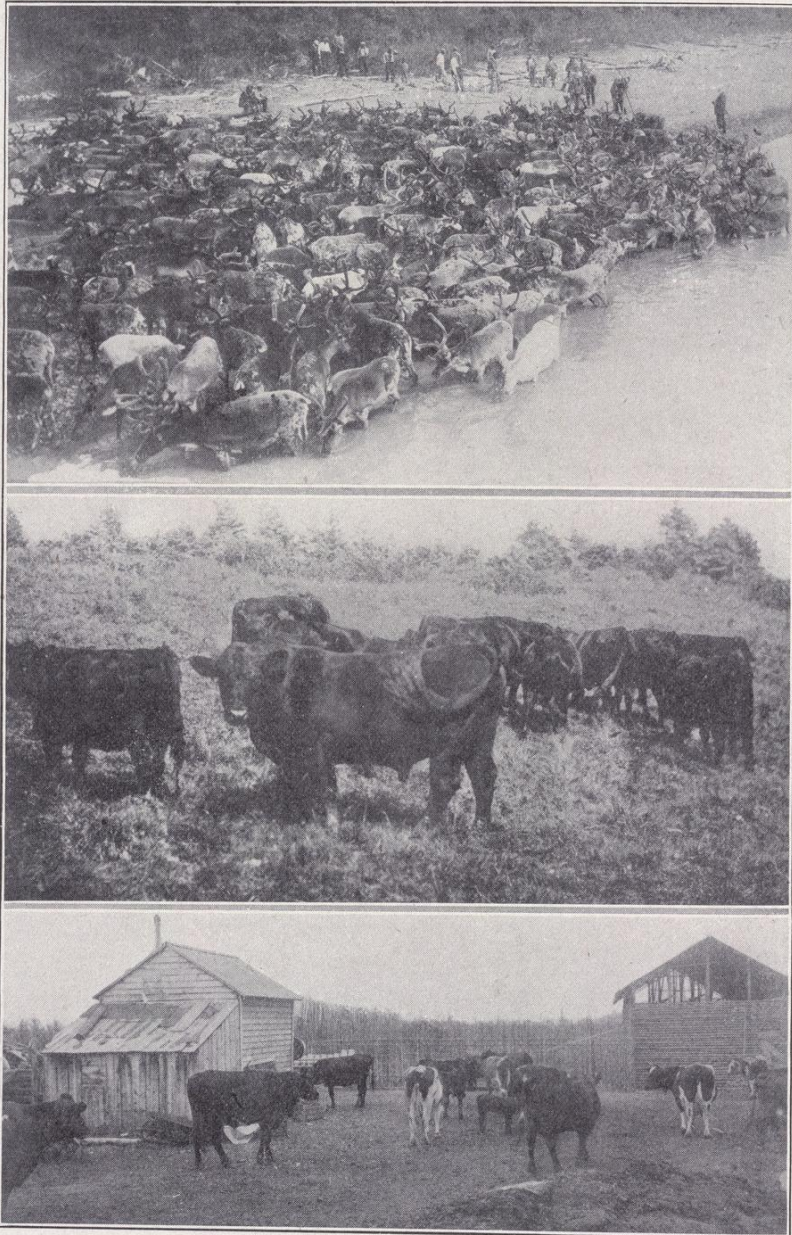


Yale University Library Digital Collections

Title	Alaskan cattle and reindeer, a source from which a large part of America's beef supply is to be had in the no very distant future
Date	1913
Rights	The use of this image may be subject to the copyright law of the United States (Title 17, United States Code) or to site license or other rights management terms and conditions. The person using the image is liable for any infringement.
Generated	2021-02-18 11:25:37 UTC
Terms of Use	https://guides.library.yale.edu/about/policies/access
View in DL	https://collections.library.yale.edu/catalog/2001372



Alaskan cattle and reindeer, a source from which a large part of America's beef supply is to be had in the no very distant future