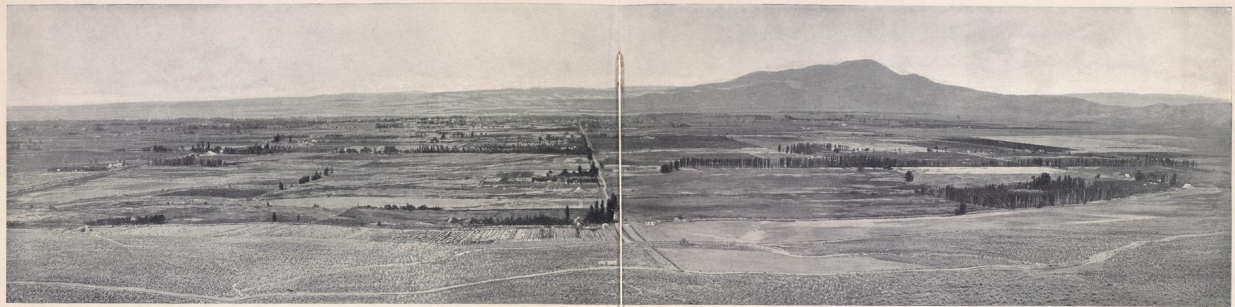


Yale University Library Digital Collections

| | |
|---------------------|--|
| Title | Panoramic View of Emmett, Idaho (top), Irrigated lands are the most productive lands in America (bottom left), This is the way plums grow on irrigated fruit lands (bottom right) |
| Date | c1909 |
| Rights | The use of this image may be subject to the copyright law of the United States (Title 17, United States Code) or to site license or other rights management terms and conditions. The person using the image is liable for any infringement. |
| Generated | 2021-02-18 11:25:18 UTC |
| Terms of Use | https://guides.library.yale.edu/about/policies/access |
| View in DL | https://collections.library.yale.edu/catalog/2001373 |



Panoramic View of Emmett, Idaho

And the district irrigated from the Canyon Canal Co.'s system. Irrigated lands are free from trees and ready for immediate cultivation. "From sage brush to crops is only four months."



Irrigated lands are the most productive lands in America. Every farmer is his own weather man and can withhold or apply moisture to any or all crops as required, making the conditions of growth and harvesting ideal.



This is the way plums grow on irrigated fruit lands.