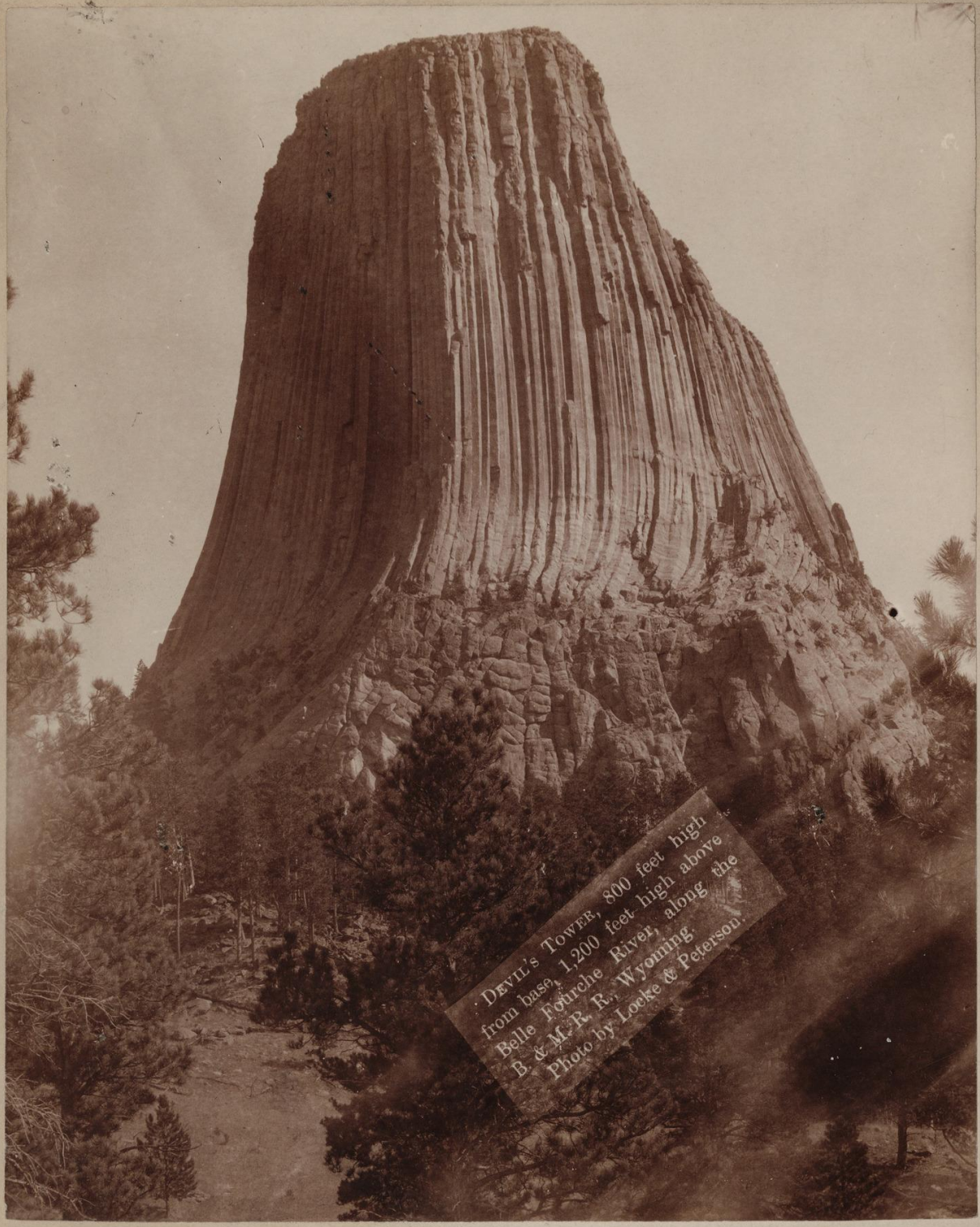


## Yale University Library Digital Collections

<b>Title</b>	Devil's Tower, 800 feet high from base, 1,200 feet high above Belle Fourche River, along the B. & M. R.R., Wyoming
<b>Creator</b>	Locke, H. R
<b>Date</b>	1895-1892
<b>Rights</b>	The use of this image may be subject to the copyright law of the United States (Title 17, United States Code) or to site license or other rights management terms and conditions. The person using the image is liable for any infringement.
<b>Generated</b>	2021-02-19 11:18:14 UTC
<b>Terms of Use</b>	<a href="https://guides.library.yale.edu/about/policies/access">https://guides.library.yale.edu/about/policies/access</a>
<b>View in DL</b>	<a href="https://collections.library.yale.edu/catalog/2011958">https://collections.library.yale.edu/catalog/2011958</a>

---



DEVIL'S TOWER, 800 feet high  
from base, 1,200 feet high above  
Belle Fourche River, along the  
B. & M. R. R., Wyoming.  
Photo by Locke & Peterson.

LOCKE & PETERSON,

DEADWOOD, S. D.

(over)

Quil. 10  
H.S.

## Easy to Reach

### Deadwood,



Hot Springs, Spearfish, and all other Black Hills points if you take the right road, — The Burlington Route.



BEST Line from Lincoln, Omaha, St. Joseph, Kansas City, St. Louis, Chicago, Denver, Peoria and all points east, west and south.

Daily trains of sleeping and free chair cars.

Ask for tickets via the Burlington — and **BE SURE YOU GET THEM.**



Full information about rates and trains will be promptly and cheerfully furnished on application to any of our Company's 1,200 agents, or to J. FRANCIS, General Passenger agent, Omaha, Neb.