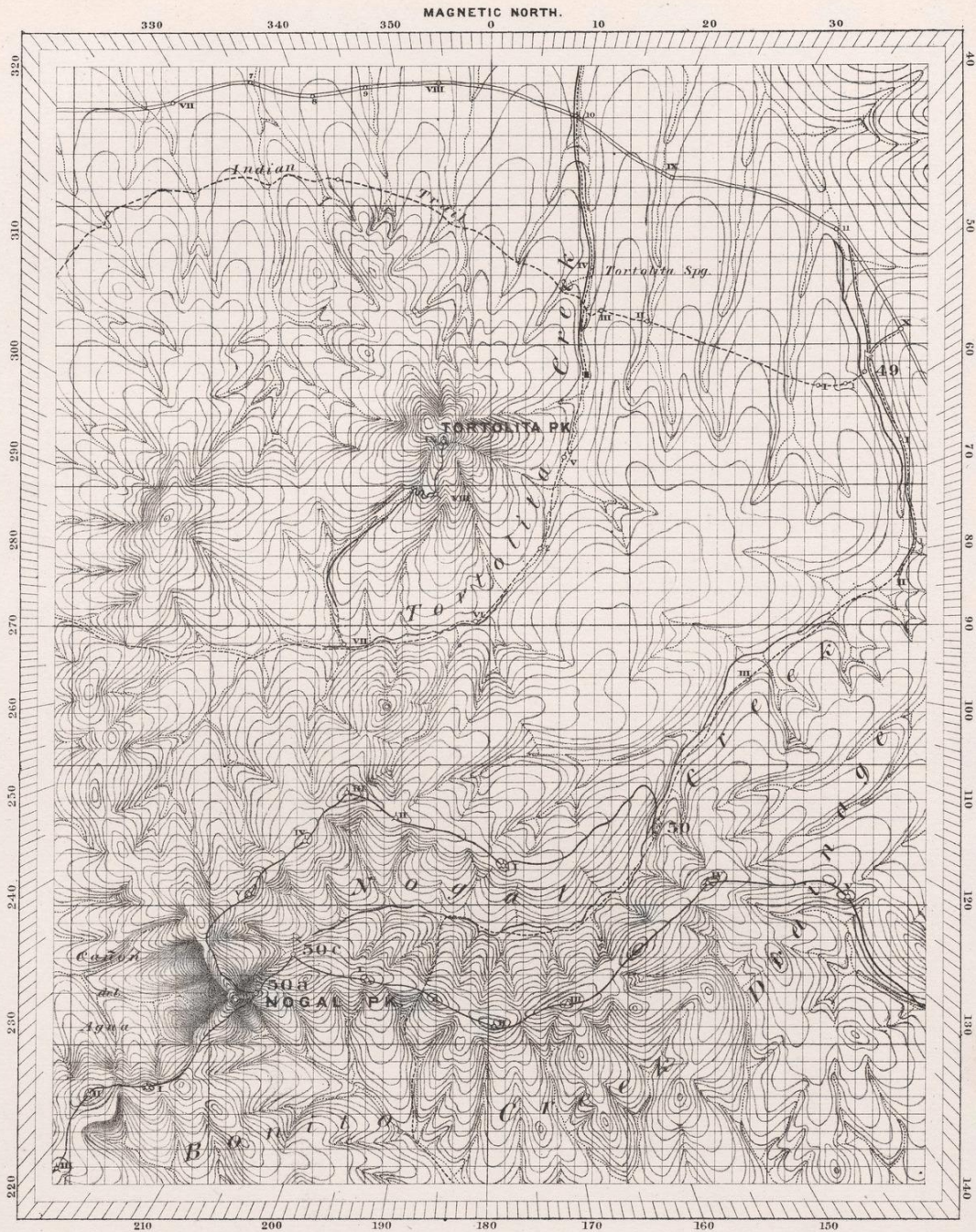


## Yale University Library Digital Collections

<b>Title</b>	Main-route and side meanders, and topographical stations. Form 3
<b>Date</b>	1873-1884
<b>Rights</b>	The use of this image may be subject to the copyright law of the United States (Title 17, United States Code) or to site license or other rights management terms and conditions. The person using the image is liable for any infringement.
<b>Container information</b>	Report upon United States Geographical surveys west of the one hundredth meridian in charge of First Lieut. Geo. M. Wheeler ... (Washington, Govt. Print. Off., 1875-1879).
<b>Generated</b>	2021-02-19 17:21:24 UTC
<b>Terms of Use</b>	<a href="https://guides.library.yale.edu/about/policies/access">https://guides.library.yale.edu/about/policies/access</a>
<b>View in DL</b>	<a href="https://collections.library.yale.edu/catalog/2015877">https://collections.library.yale.edu/catalog/2015877</a>

---



Main-route and Side Meanders, and Topographical Stations.

Form 3 .

(Scale : inch to 1 mile)