



Yale University Library Digital Collections

| | |
|---------------------|--|
| Title | Embryonic development |
| Creator | Bischoff, Ferdinand R, Ecker, Alexander, 1816-1887 |
| Date | Undated |
| Rights | The use of this image may be subject to the copyright law of the United States (Title 17, United States Code) or to site license or other rights management terms and conditions. The person using the image is liable for any infringement. |
| Generated | 2021-02-20 18:41:13 UTC |
| Terms of Use | https://guides.library.yale.edu/about/policies/access |
| View in DL | https://collections.library.yale.edu/catalog/2036677 |

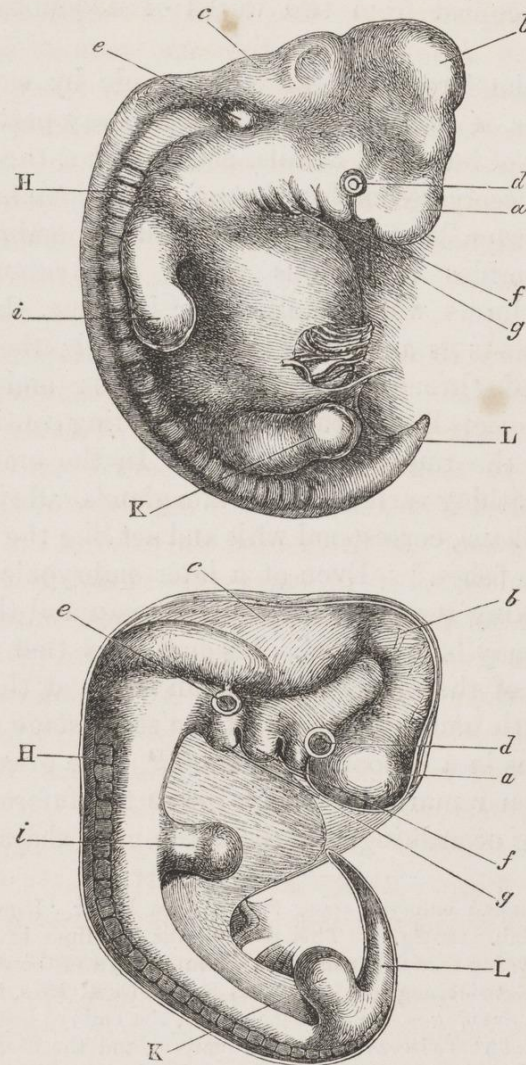


Fig. 1. Upper figure human embryo, from Ecker. Lower figure that of a dog, from Bischoff.

a. Fore-brain, cerebral hemispheres, &c.
 b. Mid-brain, corpora quadrigemina.
 c. Hind-brain, cerebellum, medulla oblongata.
 d. Eye.
 e. Ear.
 f. First visceral arch.

g. Second visceral arch.
 H. Vertebral columns and muscles in process of development.
 i. Anterior } extremities.
 K. Posterior }
 L. Tail or os coccyx.